

Merchandising Solutions

3 DAY PART patents pending worldwide



The Rollerboard™ is a manually operated three-sided Merchandising System.

Triple Sided Indoor Merchandising Systems

BENEFITS

Our range of Indoor Merchandising systems have been specially design with maximum illumination, transparency flexibility (static and rotating), operational simplicity. These products are ideal for Point-of-Purchase Displays, such as menuboard, retail displays and directories.

SPECIFICATIONS

Double module - 1160mm in length, accommodating translite configurat of one double or two single translites.

Triple module - 1725mm in length, accommodating translite configurations of one single and one double, or three single translites.

Rollerboard™ gives you the option of a wall mount or a ceiling mount configurations.

The Rollerboard™ units are electrically wired for 220v - 240v, 50Hz as standard.

TRANSLITE SIZES

For best results we recommend satin finish translites to be used.

The Coates Signco Rollerboard™ accommodates translite sizes:

Single: 555 x 555mm (21.85 x 21.85") allow +1mm -3mm tolerance

Double: 555 x 1150mm (21.85 x 45.276") allow +1mm -3mm tolerance

Preferred translite thickness is 0.3mm (0.0118")

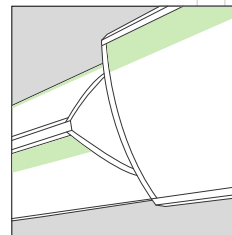
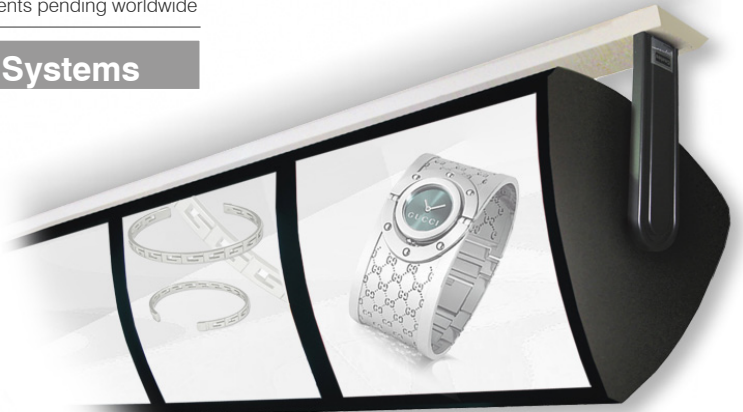
Viewing area:

Single: 529 x 521 mm (1 x single size translite)

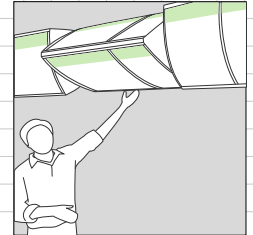
Double: 529 x 521 mm (2 x single size translite), 1118 x 521 mm (1 x double size translite)

Triple: 512 x 521 mm (3 x single size translite); 1110 x 521 mm

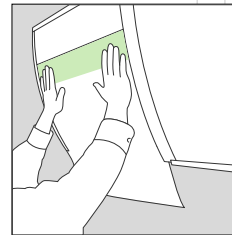
(1 x double size translite) and 512 x 521 mm (1 x single size translite)



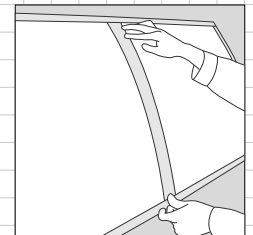
Easy three-sided rotation



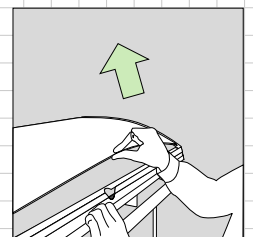
Height friendly operation



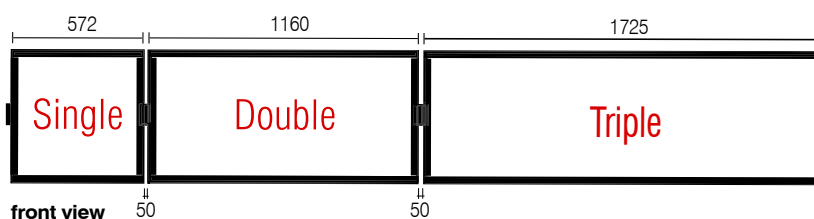
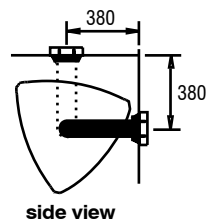
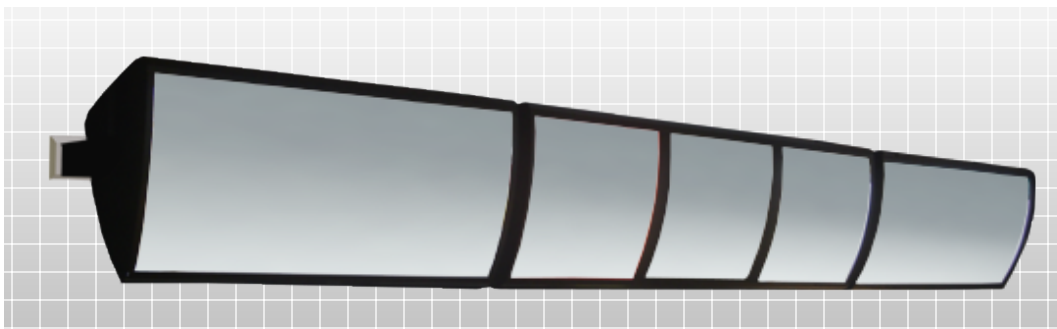
Rapid translite insertion



Flexible re-positioning of translite divider



Simple fluorescent tube access



NOTE: Coates Signco recommends an engineer to be engaged to structurally certify menuboard installation. If menuboard installation is not structurally certified, Coates Signco will not be held liable for improper manufacture or installation of menuboard.

If Coates Signco is required to appoint an engineer the following process will be carried out:

- Initial site visit by engineer
- Drawing generated by engineer specifying additional structural requirements for the menuboard installation
- Engineer's return to site after installation is complete, checking that the structural work carried out adheres to engineer's issued drawings
- Engineer issuing engineering certification for the menuboard installation

If others are to install Coates Signco's Rollerboard System we recommend an engineer's certification following the procedures outlined is issued after the menuboard installation is complete.



Coates Signco Pty Ltd

242 Young St Waterloo

NSW 2017 Australia

T +61 2 9699 3122

F +61 2 9698 2379

www.coatessignco.com

sales@coatessignco.com.au

For Custom Design Merchandising Systems, please call (02) 9699 3122
Visit our showroom to see our extensive range of Merchandising Systems.