

Merchandising Solutions

2 DAY PART DRIVE THRU patents pending worldwide



The Rollerboard™ is a manually operated two-sided Merchandising System.

2 Sided Indoor & Outdoor Merchandising Systems

BENEFITS

The Rollerboard™ 2 Sided Indoor & Outdoor Merchandising System includes the following benefits:

- Ease of operation- Very low maintenance with easy fluorescent tube access
- Easy and fast translite change
- Effective and safe translite retention
- Flexible re-positioning of translite divider with each Rollerboard™ Series III unit
- Simple magnetic latch locking system for each of the three faces
- Includes a new curve face design appearance
- Robust powder coated stainless steel doors with internal galvanized frame
- All internal fasteners and screws are stainless steel

SPECIFICATIONS

Sizes for 2 Sided Indoor/Outdoor Merchandising Systems:

- A. 1960mm high x 990(dia.) width
515mm high base with 1440mm high display area
- B. 2200mm high x 700mm (dia.) width
400mm high base with 1800mm high display area
- C. 2425mm high x 825(dia.) width,
400mm high base with 2025mm high display area

- Rollerboard™ Merchandising System has UV protected polycarbonate display faces, top of the range, virtually unbreakable, 10 year guarantee against weathering (excessive yellowing).
- Option for simple magnetic latch for locking rotatable merchandising system in two or three set positions.
- Each display face comes complete with security key lockable doors.
- The Rollerboard™ units are electrically wired for 220v - 240v, 50Hz as standard.

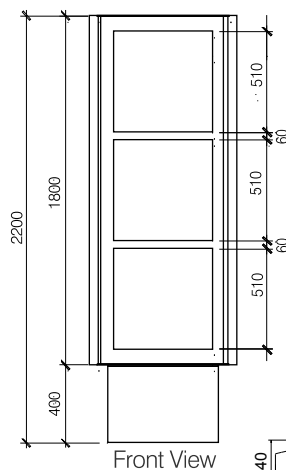
TRANSLITE SIZES

For best results we recommend satin finish translites to be used. The Coates Signco Rollerboard™ accommodates translite sizes:

Single: 555 x 555mm (21.85 x 21.85") allow +1mm -3mm tolerance

Double: 555 x 1150mm (21.85 x 45.276") allow +1mm -3mm tolerance

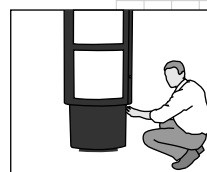
Preferred translite thickness is 0.3mm (0.0118")



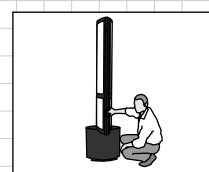
2 Side



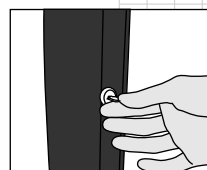
Optional Rotating



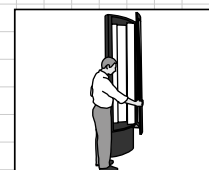
Locate magnetic latch at base of rotating section of the unit.



Gently turn menu board until required display face is fully illuminated.



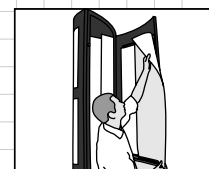
Insert display panel key (provided with unit) into locks and turn clockwise to unlock.



Open display panel door and locate translite held inside display face.



Gently insert translite into top and bottom retention channels on the side closest to you.



Repeat steps for remaining translite(s).



Coates Signco Pty Ltd
 242 Young St Waterloo
 NSW 2017 Australia
 T +61 2 9699 3122
 F +61 2 9698 2379
 www.coatessignco.com
 sales@coatessignco.com.au

For Custom Design Merchandising Systems, please call (02) 9699 3122
Visit our showroom to see our extensive range of Merchandising Systems.